

AUCTION
MORE...
MACHINERY AND

Saturday

May 22, 2010

Polson, MT

MILE MARKER 66 NORTH OF POLSON ON HWY 93 (NEXT TO JETTE STORE)

AUCTION

REHBEIN ENTERPRISES DISPERSAL AND CONSIGNMENT AUCTION

10:00am

Saturday - May 22nd

Vehicles and Machinery sell at 12pm - Noon



HEAVY EQUIPMENT, MACHINERY, TRUCKS, TRACTORS, PICKUPS AND RV'S AND SHOP TOOLS INCLUDING SNAP-ON TOOL BOXES

EVERYONE WELCOME

FOOD AND BEVERAGES WILL BE AVAILABLE



Don't Miss This Auction

See Back of Flyer for Items / Descriptions

Register Online at: www.riverswestauction.com
For Online Bidding on most of the items - Powered by proxibid.

ONLINE BIDDING
Powered by
proxibid

Visit www.riverswestauction.com for more photos and listings.

Jason@riverswestauction.com

* There are a few pieces of equipment, in this auction, that will sell upon owner confirmation.

TERMS

All major credit cards are accepted, MasterCard, Visa, Discover, American Express, and Debit Cards.
We accept bankable checks with Montana Drivers License.
If you believe you will be spending over \$2,500 by check, a bank letter of guarantee is recommended.
No items shall be removed from premises until full settlement has been made.
To register for a bidder number you will be required to show a drivers license or other form of government issued identification.

If using a credit card, you will be charged a 4% convenience fee.
Please inspect all items to your own satisfaction. All items are sold "as is - where is".
No warranty is expressed or implied by the auction company, staff or owners.
Announcements made day of sale take precedence over any printed or website advertising.

406/239-3529

JASON CLINKENBEARD

Rivers West Auction LLC

"Where INTEGRITY is the rule"

MACHINERY AND MORE... AUCTION

Visit www.riverswestauction.com for more photos and listings.

HEAVY TRUCKS

*1991 MACK dump truck 15' 10-12yard Alum. Box
90%rubber, new seat, AC, air ride susp.,350 Mack engine
2000 miles on rods and mains, new clutch, set up to pull pup
1994 Ford cabover 24' box van w/ lift gate,255K miles , 8.3 cummins
6speed trans.
1989 International 9700 series cabover truck w/ sleeper,set back front axle,
air ride susp., new batt., new fuel pump, alum wheels,947k miles, 400 cum
mings w/ 400k on rebuild, 15 speed
1970 M816 Kenworth wrecker, 350 Cummings 13 spd trans new batts.
Recent work on hydraulics,new rods and mains
1987 Freightliner Cabover 444cummins 10spd trans,1078000 miles.
1992 International 8200 6X4, 350 Cat, 3406E, 9spd, 1114000miles
1964 GMC3500 fuel truck, 4 compartment 1000gal tank, (good pump and
meters)
1984 Peterbilt end dump truck with 16' aluminum box, new interior, A/C,
good rubber, 400 Cummins, 18spd, 897K miles)

HEAVY EQUIPMENT

*1975 FWD 5ton, 25' boom, rough terrain crane
6V92 Detroit diesel, Mod.# H446A Ser.# H446A268
*1998 Case 686G, 6000Lb., 4X4X4 Telescopic Forklift (telehandler)

VEHICLES

1952 Series 50 Buick Riviera project car w/ parts
2 door hard top VIN# 16442915 1968 Impala 2 door hard top, 307cc, runs
good VIN# 164878C139068
1996 S-10 long box PU w/B6 engine, auto (trans. Needs work)
2000 S-10 short box parts truck good engine all parts
*1987 F350 4X4, custom service truck w/ metal Knapheide service box,
460c.c. low miles 61K, (retired fire dept.)
1964 ford 1 ton dually (needs work)
1983 Dodge 1ton dually service truck w/cherry picker boom

MACHINERY AND TRACTORS AND IMPLEMENTS

*2009 T2734 Montana Tractor 4X4 w/loader and ROPS
31hours quicktatch bucket, PTO, 3PT, 27HP, Diesel
9N Ford tractor (attachments will sell separate)
6' 3PT back blade
4' 3PT brushhog
6' Disc
607 Bobcat backhoe attachment Mod.#607 Ser.#775001731
Bob Cat pallet forks
*Case 1845C Skidsteer uni-loader w/bucket
2830hours mod.# 1845C VIN# JAF0068315
Quicktatch pallet forks (will sell separate)
International tractor w/ post pounder

TRAILERS

Hogg and Davis spool trailer no. 9754-209
1963 Peerless 3 compartment steel fuel trailer (pup)
(each compartment holds 1775gallons)
*27' triple axle fifth wheel trailer w/over hitch deck (8k lbs.axles)

RV'S

1993 37' CRANE RK Jayco travel trailer 15' slide, 24' awning
VIN# 1UJCJ02R8P1HE0064

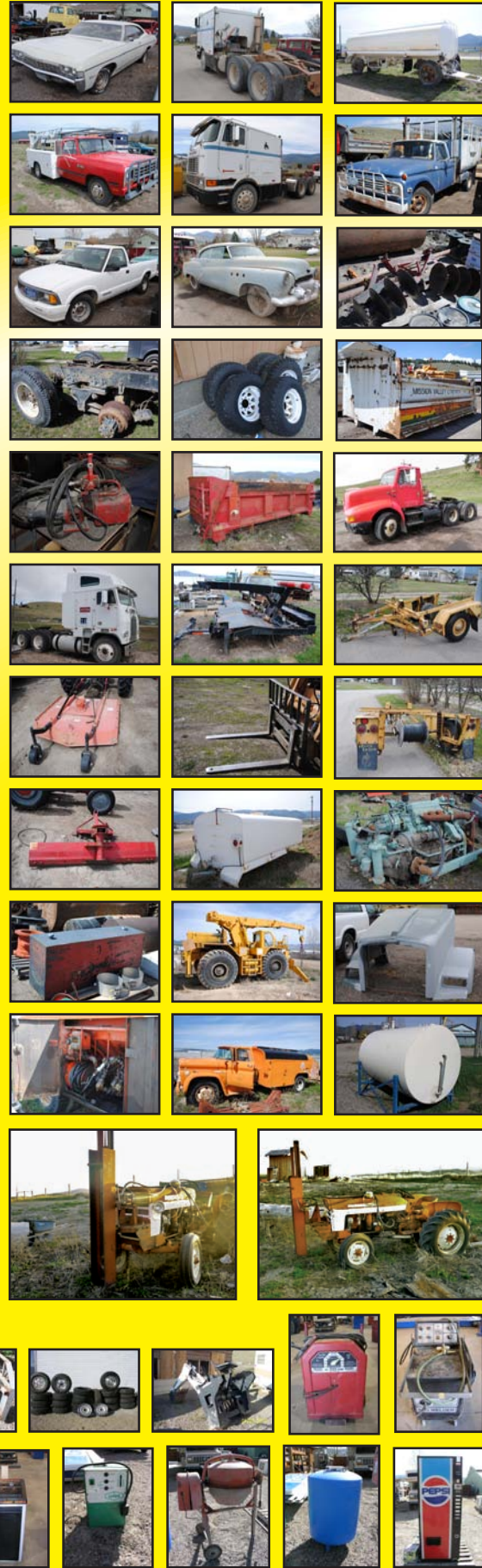
HEAVY PARTS

4 new van style truck seats
Page nonsteerable lift axle mod.#LM-2000-038 ser.#90020068
aluminum bang board(headache rack) w/chain hangers
steerable lift axle (Hendrickson)
8 - 22.5 tubless rims/wheels 6hole some w/tires
Detroit diesel engine V6 53 w/ allison trans
enginepart# R6759615 Trans serial# 31424
Hood for 2006 T800 Kenworth (repaired and primed) part# k146-1312
mod.# T803
Hendrickson walking beam suspension w/complete rearends
Part# 10711-5 REV-J

AUTO PARTS AND ACCESSORIES

9 boxes of heavy rubber latches
5- matching tires w/ wheels 33X12.50R16.5 (1new)
misc. auto parts, seats, body accessories
1999- Chevy 454 vortec engine 44k complete
Lots of Misc. tires and rims

Too Much To List



BEDS AND BOXES

Winch bed
14' dump box (scissor style both end dump)
11' Dump box w/ twin hydrolic cylinders and sub
frame
Tow truck bed w/ hydro. Boom and wheel lift
Steel service bed Knapheide
2 -12 Yard dump boxes
*4000 gallon water tender tank (ready for install
on truck)

SCRAP IRON INC. 1TON DODGE TRUCK

MISC. SHOP AND TOOLS

Bander
Goodall 704 startall gas powered jumper
Porta Power
commercial (airless) paint sprayer
Lots of specialty shop tools
Shop stove large 4'long and 3' dia.
500gallon oil tank w/ stand
Waste oil heating unit (like new)
Clean Burn Model CB1800 , 185000BTU
Modern Pepsi machine
2 unit oil tank approx400gal
Model 83-315 MIG welder
Pressure washer
MRC 150 R12 (A/C) Aircondition charge machine
R134-A (A/C) Recovery, recycling/charging station
SNAP ON 9 drawer top chest (like new)
MOD.# KRA59K, Serial# F210498C
26"X17"X14.5"
SHOP-TASK lathe combo drillpress
SNAP ON roll cab tool chest 13 drawer (like new)
MOD.# KRA5213DPC, Ser.# J169760C
53.5"X39"X20"
5HP 60gallon air compressor (upright)
125000BTU space heater
Twin Pump 3HP air compressor (2300psi)
225 AMP Lincoln arc welder
LINDE 330 welder
3 - metal shop storage cabinets
110 welding system
Air hose reel w/ hose
More airhose
10 ton shop press

MISC. EQUIPMENT

Dyna-Might hydrolic pump unit
ser#HEP30621
82 gallon pressure tank
Modern Pepsi vending machine
1.3 Horsepower electric cement mixer
2 - hydrolic winches
Waltco 12V hydrolic pump w/ cylinder
(Too many items to list more items being added
daily.)
*Denotes these items will sell under owner
confirmation.



Don't Miss This Auction

THIS WILL BE A GREAT SALE TO ATTEND. GARY, TYLER AND WADE HAVE PUT SOME GOOD EQUIPMENT TOGETHER AND SEVERAL CONSIGNORS HAVE ADDED MACHINERY AS WELL. IF YOU HAVE SOMETHING TO ADD PLEASE LET JASON KNOW.

Starts at 10:00am
Vehicles and Machinery sell at 12pm - Noon
Saturday
May 22, 2010
Polson, MT
NORTH OF POLSON ON HWY 93 (NEXT TO JETTE STORE)



406/239-3529
JASON CLINKENBEARD

BIG SALE • BIG AUCTION

PO Box 351 • Arlee, Montana 59821

PRSRD STD
US POSTAGE
PAID
MISSOULA MT
PERMIT #569

"Where INTEGRITY is the rule"
Rivers West Auction LLC