

GEORGE GOULD AND NEIGHBORS DISPERSAL AUCTION

**Saturday
May 7, 2011**

**71 Silcox Lane
Thompson Falls, MT**

Off of HWY 200 in Thompson Falls, MT follow auctions signs, go east across railroad tracks, take Ferry Street to Columbia Street and go past Fish and Game office. Follow auction signs to Silcox Lane and sale site.

~ Lots of Items ~



**Auctioneers:
Jason Clinkenbeard and Brett Johnson**
www.riverswestauction.com for more photos and listings.
Jason@riverswestauction.com

AUCTION

Sale date and time:
Saturday, May 7th ~ 11am

Preview:
Friday, May 6th from noon to 6pm
and on sale day or by appointment

There are quite a few larger items at this sale, so it will go fairly fast, please show up early so as not to miss anything. *Jason*



406/239-3529 • JASON CLINKENBEARD



FOOD AND BEVERAGES WILL BE AVAILABLE

EVERYONE WELCOME

Phone Bids will be accepted.
Call Jason for details 406-239-3529

See Back of Flyer for
Items / Descriptions

TERMS

Unless noted otherwise all items are reported to be in good working order at the time of the sale. However, all sales are "as is" "where is" with no guarantees by Rivers West Auction, LLC. Announcements the day of the auction supersede any previous ads. Driver's license or government issued ID required to register as a bidder.

Our normal terms and conditions are as follows:

All major credit cards are accepted, MasterCard, Visa, Discover, American Express, and Debit Cards.

We accept bankable checks with Montana Drivers License if you are known by the auction company. If unknown to the auction company, finances will need to be declared at registration. If you are purchasing a titled item or piece of heavy equipment (car, truck, boat, tractor etc.), a bank letter of guarantee is recommended if you are unknown to the auction company. Driver's license or government issued ID required to register as a bidder.

If using a credit card, you will be charged a 4% convenience fee.

There will be certain auctions where these terms may change. When there is an auction with a change, it will be noted in the Auction Calendar and explained prior to the auction sale.

GEORGE GOULD AND NEIGHBORS DISPERSAL

Visit www.riverswestauction.com for information and upcoming Auctions or call Jason Clinkenbeard at (406) 239-3529.

GEORGE GOULD AND NEIGHBORS PROPERTY - More items coming in daily!

Heavy Equipment and Trucks

1981 John Deere 550C Dozer with winch and quicktach brush blade
 Serial# 376217T 6 way blade, oil clutches
 1977 Case 580C construction King Backhoe with extended boom option
 Serial# 8958406 New tires 7052 hours
 Custom made single drum Jammer/winch 6 cyl. INT and 300' cable on 2 axle trailer
 54" Coeur d'alene log grapple
 Bob Cat 6' 6 way dirt blade attachment (like new)
 International Loadstar 1700 w/ hoist to ground 24' flatbed
 1972 Totemall 20 ton tilt deck heavy equipment trailer (pintel hitch)
 1979 Fruehauf 9-10 yard dump trailer pup
 Custom built 9-10 yard dump trailer pup

Tractors

Farmall Model A International custom weed sprayer w/50gal tank
 Serial #FAA184271
 John Deere model 40 serial #64494 (very good tin work)
 Farmall Super C w/ 7' mower, 12 Volt, new front rubber, (runs like a Swiss watch)
 Model FC Serial #145271
 1965 International Cub 3 PT, PTO, mower tires,
 Serial #225363J
 1956 Massey-Ferguson MH-50 w/ new custom loader
 new clutch 1-11, one owner, Serial #SGM502725

Implements and Attachments

John Deere 46A Loader w/like new bucket fits JD3010
 King Kutter 5' box scraper w/ripper teeth (like new)
 5' 3PT brush hog mower
 2- B4 Whittman 4' power trowels (good condition, tight)

Recreation Equipment

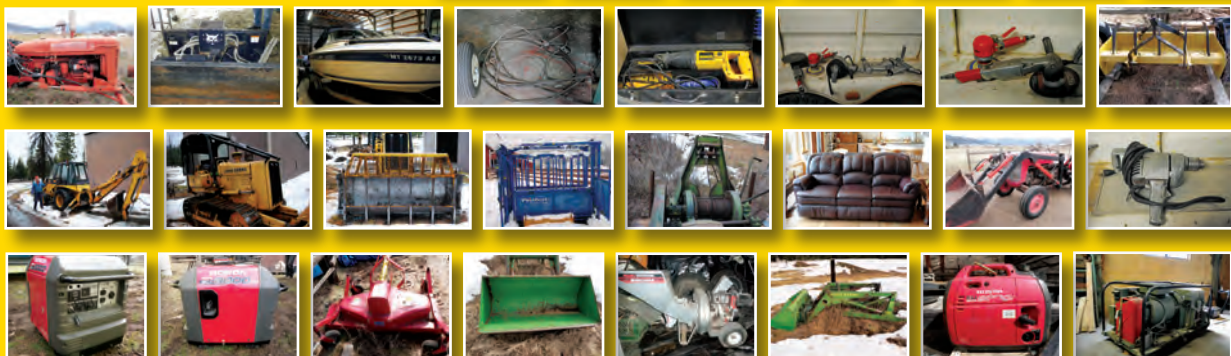
1989 Sea Ray 190 Bow Rider Boat
 2008 reproduction Whizzer Motor Bike Model NE5 (74 original miles, 4 stroke, 120 MPG)
 2005 Chrysler PT cruiser Motor Bike conv. 80cc 2stroke
 2006 Roketa 400CC 4X4 ATV
 2004 Polaris RMK 800 long track runs great
 New Seahawk inflatable 3 person raft

Trailers

2004 Triton 2 place aluminum ATV trailer drive on/off
 Custom built 8X24 (4' beavertail) 14K gvw bumper pull flatbed w/flip up ramps, new wiring, 10 ply tires
 1972 Totemall 20 ton tilt deck heavy equipment trailer (pintel hitch)
 1979 Fruehauf 9-10 yard dump trailer pup
 Custom built 9-10 yard dump trailer pup

Generators

10KW Military GenSet 20HP 4Cylinder gas
 Honda EU3000is inverter power plant (like new)
 Honda EU2000i inverter generator
 Valakaz 4000watt CX Diesel generator
 TG1200 generator



Livestock related

Fred Hook endurance saddle
 English riding saddle
 2- 75 gallon stock tanks
 Preifert squeeze chute
 Misc. Horse tack

Shop and Tools

2- B4 Whittman 4' power trowels (good condition, tight)
 Cable chokers
 Binders
 Dewalt sawsall like new
 Misc. Air tools
 sanders, drills, chisel, grinders
 pipe vise
 Reemer set
 Porta power
 2- oil / grease pumps
 Ryobi 31CC 16" weed eater
 16" variable speed scroll saw (new in box)
 3HP 5 gal electric air compressor
 Appliance dolly (like new)
 electric log splitter
 Craftsman chipper/shredder 9 HP
 Craftsman sand blaster
 Other items still coming in

Miscellaneous

Magnum short box tonneau cover (cap) gloss black Fiberglass
 New Lakos "Sand Master" -
 residential sand trap for well pump Mod #H20-30
 45 watt solar panel kit (new)
 Husky sway bar/equalizer hitch

Household items

Leather recliner couch burgundy/ox blood like new
 Showtime rotisserie oven dbl chicken, turkey or roast
 Crossley Shelvador upright freezer like new
 Other items still coming in



There are too many items to list,
 there should be something for everyone



Saturday
May 7, 2011

Silcox Lane
Thompson Falls, MT

Off of HWY 200 in Thompson Falls, MT follow auctions signs, go east across railroad tracks, take Ferry Street to Columbia Street and go past Fish and Game office. Follow auction signs to Silcox Lane and sale site.

Sale Preview:

Friday, May 6th from noon to 6pm and on sale day or by appointment

Auctioneers:

Jason Clinkenbeard and Brett Johnson

www.riverswestauction.com for more photos and listings.



MANY GREAT
 ITEMS

BIG SALE • BIG AUCTION

MANY GREAT
 ITEMS

Contact: Jason Clinkenbeard at 406-239-3529 or email Jason@riverswestauction.com



PRSRTD STD
 US POSTAGE
 PAID
 MISSOULA MT
 PERMIT #569

SUCCESSFUL AUCTION MANAGEMENT YOU CAN TRUST
 IF YOU HAVE PERSONAL PROPERTY OR REAL ESTATE AND YOU ARE THINKING ABOUT
 HAVING YOUR OWN AUCTION, PLEASE GIVE US A CALL FOR FREE AUCTION CONSULTATION.

PO Box 351 • Arlee, Montana 59821



"Where INTEGRITY is the rule"